



## **On-line PICASSO PROJECT**

**Comprehensive Catalogue Raisonné  
Prof. Dr. Enrique Mallen**

**1904**



**Vieillard aveugle et fillette (L'aveugle).** [Barcelona] Paris. [Early]/1904. India ink & watercolor on paper. [47 x 31,1] 46 x 31 cm. Sotheby's. #302, NY7380, 11/11/99. Formerly Curt Burgauer Collection, Küsnacht; Max G. Bollag, Zürich.

**OPP.04:006;** DB.DXI:20; LD:126; P.I:972; PP.04:071; Z.VI:631; JL.71:13p; LO.85\*:198; LU.64\*:227; PA.67\*:n/a; RL.92\*:9; WS.94:26p; ZU.25\*:153

---

**Picasso et Sebastià Junyer-Vidal assis près de Célestine.** Barcelona. [1903~] [Early/1904]. Wax crayons on paper [colored pencil]. [26 x 33] 25 x 32,9 cm. Christie's. #262, 7601, 06/25/08. Formerly Sebastià Junyer-Vidal Collection.

**OPP.04:007;** P.I:956; PP.04:009; Z.VI:480; AC.46:179; CS.15:66p; GE.63a\*:7; JP.66:79; LO.63c\*:27; OR.90:64p; PB.21:78; YP.13\*:35





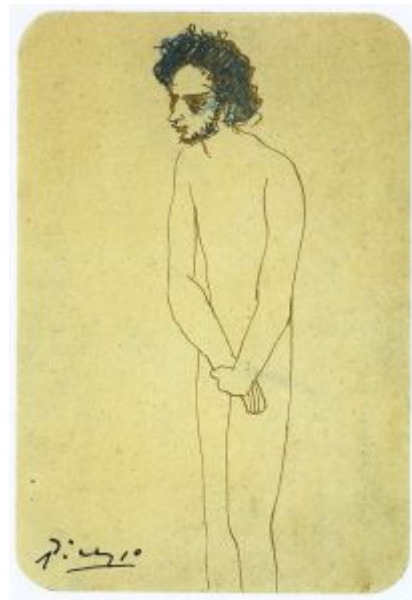
**Le repas du gueux.** Barcelona. [1903~]  
[Early]/1904. Watercolor. [24 x 33] 24,2 x 32,6  
cm. Pérez Simón Collection, México. Formerly  
Sotheby's. #23, 06/30/92.

**OPP.04:009**; DB.X:1; LD:106; P.I:954;  
PP.0304:015; Z.I:209; BF.21\*:234p; HK.65:21p;  
MA.17b\*:77; MA.22b\*:20; PA.64b\*:241

---

**Jeune homme nu les mains croisées.** Barcelona. [1903~]  
[Early]/1904. Pen, brown ink & blue pencil on business card.  
13 x 9 cm. Private collection, Barcelona.

**OPP.04:014**; P.I:951; PP.0304:019; Z.I:145; AC.09:113p;  
BS.19:121p; BW.03:12; EV.14\*:213p; FC.00\*:15;  
GI.95\*:n/a; JF.94a:20; JR.91:279p; MF.01:76p;  
PA.19h\*:143; WR.12b:62





**Le fou au chien.** Barcelona. [1903~] [Early]/1904. Watercolor on wove paper. 32,6 x 23,2 cm. The Solomon R. Guggenheim Museum, NYC. (Inv 78.2514.T40). Thannhauser Collection.

**OPP.04:015**; DB.X:5; LD:103; P.I:947; PP.0304:018; Z.I:184; JG.84\*:201; NY.65b\*:36; PD.09:39p; PL.89:16; TC.92:79p; TO.68:20; UP.00:136

---

**Autoportrait (Picasso à Max Jacob).** [Barcelona]. [Early]/1904. Pencil on paper. [20,9 x 13,1] 21 x 13 cm. Moderna Museet, Stockholm. (Inv NMH 136/1945). Purchase 1945.

**OPP.04:118**; PP.04:082; Z.VI:679; FO.82:105p; GC.96:18p; HS.94\*:45; JR.91:321p; KR.11\*:100p; MR.21:2.3; PB.21:88





**Portrait d'Octavi, le fils du peintre Catalan Ricardo Canals.**

Paris~Barcelona. Winter~Spring/1904. Pen & brown ink on paper. 21 x 13,3 cm. Sotheby's. #408, 6489, 11/04/93. Formerly Christie's. #119, 11/06/91.

**OPP.04:131**; PP.04:004; Z.VI:1467; HK.65:26p; MM.97:42p

**La Célestine (Carlota Valdivia).** Barcelona. March/1904. Oil on canvas. 74,5 x 58,5 cm. Musée Picasso, Paris. Donation Fredrik Roos, 1989.

**OPP.04:003**; DB.IX:26; LD:99; MPP:1989.05; P.I:958; PP.0304:010; Z.I:183; AB.12\*:94p; AC.46:161; AC.81:86p; BJ.17\*:n/a; BJ.19\*:n/a; BS.19\*:143p; BS.55:121p; CS.15:60p; DA.03:18; DL.05\*:n/a; EC.02:85; EV.15:189p; GB.87:31; GP.32\*:23; HJ.83:12p; HJ.96:12p; IS.98:36p; JF.96:47p; JL.06:61p; JL.66\*:19; JL.71:5p; JP.66:90; JR.91:289p; KZ.32\*:21; LG.92:35; LP.99:35p; MA.08a\*:n/a; MG.03b\*:1; MM.00:20p; MM.97\*:100; NM.95:87p; PA.07a\*:113p; PA.19h\*:189; PA.21f\*:8; PD.09:44p; PD.65:38p; PL.03:6; RP.67a:5; SY.11\*:n/a; TI.71:98p; TK.92:7; TO.68:17; UP.00:122; WR.80\*:52p; WR.96:243p; WS.07:245p; WW.89:277p; WW.91:99p





**Carlota Valdivia et Sebastià Junyer-Vidal (Étude).**

Barcelona. [1903~] March/1904. Crayon & charcoal on paper. [38 x 27,3] 36,5 x 27 cm. Sotheby's. #20, N08987, 05/07/13. Formerly Alex M. Lewyt Collection, NY; M. Motte Collection, Geneva; Sebastià Junyer-Vidal Collection, Barcelona.

**OPP.04:008**; DB.IX:25; LD:99A; P.I:957; PP.0304:009; Z.I:191; AC.46:160; AS.60:22p; CS.15:66p; GE.63a\*:8; JL.71:208p; JP.66:89; LU.64\*:225; MM.97\*:99; NY.60c\*:40; OR.90:65p; PA.67\*:n/a; VV.62\*:185; WR.80:47p; WR.96:242p

---

**L'artiste peignant Carlota Valdivia (La Célestine).**

Barcelona. [1903~] [March]/1904. Conté pencil & color pencil on paper [OïC]. 26,7 x 20,6 cm. Private collection.

**OPP.04:098**; P.I:955; PP.0304:008a; Z.XXII:56; JR.91:289p; PB.21:79; UP.00:121; WR.96:242p





**L'artiste peignant Carlota Valdivia (La Célestine).**  
Barcelona. [1903~] [March]/1904. Conté pencil & colored  
pencil on paper. 26,7 x 20,6 cm. Private collection.

**OPP.04:113**; PP.0304:008b; MM.97\*:B98

---

**Portrait de Lluís Vilaró.** Barcelona. 15-March/1904. Oil on panel.  
45 x 24,5 cm. Sotheby's. #30, L24002, 03/06/24. Formerly Merz  
Collection, Andorra; Christie's. #42, 05/17/83; Private collection,  
Switzerland.

**OPP.04:071**; DB.X:12; LD:110; P.I:959; PP.04:006; Z.I:164;  
TO.95a\*:177





**Portrait de Jaume Sabartés.** Barcelona. Spring/1904. Oil on canvas. 49,5 x 37,5 cm. Nationalgalerie, Museum Berggruen, Staatlichen Museen zu Berlin. Formerly Sotheby's. #26, 04/03/90; Kunstneres Museum, Oslo; Jaume Sabartés Collection, Paris.

**OPP.04:025**; DB.X:11; LD:109; P.I:961; PP.04:005; Z.VI:653; BL.06\*:69p; BR.96\*:9; BS.55:247; EC.16\*:55; EV.15:115p; JR.91:286p; OS.56\*:6; PA.37a\*:17; TO.95a:184p; TO.96a:184p; UP.00:138; WR.96:241p

**Autoportrait.** Paris. 24-March/1904. Ink on paper (Published in La Tribuna, 03/24/1904). 58,5 x 44,7 cm. Arxiu Històric de la Ciutat de Barcelona.

**OPP.04:125**; PB.21:86; YP.13\*:27







**Autoportrait.** Paris. 24-March/1904. Ink on paper (Published in El Liberal, 03/24/1904). 58,2 x 43,3 cm. Arxiu Històric de la Ciutat de Barcelona.

**OPP.04:135**; PP.04:007; AB.00\*:22; JR.91:276p; PB.21:85; YP.13\*:26



**Illustrations (Miguel Sarmiento, 'Picasso').** Barcelona. 24-March/1904. Ink on paper (Published in La Tribuna, 03/24/04). 58,5 x 44,7 cm. Arxiu Històric de la Ciutat de Barcelona.

**OPP.04:136**; AB.00\*:25



**Buste de femme (Madeleine)**. Paris. April/1904~June/1905. India ink. 28 x 24,5 cm. Marina Picasso Collection. (Inv 00379). Courtesy Galerie Jan Krugier, Geneva.

**OPP.04:122**; PP.0304:005; Z.XXII:50; GS.85\*:11; MP.81\*:33

**L'artiste et Sebastià Junyer-Vidal partent**. Paris. Mid-April/1904. Ink & color pencil on paper. 22 x 16 cm. Museu Picasso, Barcelona. Sebastià Junyer-Vidal Donation, 1966.

**OPP.04:037**; MPB:70.803; P.I:962; PP.04:010; Z.VI:485; AC.23:n/p; EC.16\*:56; EH.96:35p; JB.96:30; LI.00\*:n/a; MM.11a\*:71; MM.97\*:101; PA.01b\*:n/a; PA.19h\*:164; PA.21g:44p; PB.21:80; PB.81\*:8A.15; TO.94\*:168; TO.95a\*:178; TO.97\*:243; WR.80:47p; YP.13\*:9





**L'artiste et Sebastià Junyer-Vidal arrivant à la frontière.** Paris. [1902] [1903] Mid-April/1904. Ink & color pencil on paper. 22 x 16 cm. Museu Picasso, Barcelona. Sebastià Junyer-Vidal Donation, 1966.

**OPP.04:038**; MPB:70.804; PP.04:011; Z.VI:486; EC.16\*:56; JB.96:31; JL.71:208p; LI.00\*:n/a; MM.11a\*:71; MM.97\*:101; PA.01b\*:n/a; PA.19h\*:176; PB.21:81; PB.81\*:8A.16; TO.94\*:169; TO.95a\*:179; TO.97\*:244; WR.80:47p; YP.13\*:10

**L'artiste et Sebastià Junyer-Vidal arrivant à Montauban.** Paris. [1902] [1903] Mid-April/1904. Ink & color pencil on paper. 22 x 16 cm. Museu Picasso, Barcelona. Sebastià Junyer-Vidal Donation, 1966.

**OPP.04:039**; MPB:70.805; PP.04:012; Z.VI:487; EC.16\*:56; JB.96:32; LI.00\*:n/a; MM.11a\*:71; MM.97\*:101; PA.01b\*:n/a; PA.19h\*:177; PB.21:82; PB.81\*:8A.17; TO.94\*:170; TO.95a\*:180; TO.97\*:245; WR.80:46p; YP.13\*:11





**L'artiste et Sebastià Junyer-Vidal arrivant à Paris.** Paris. [1902] [1903] Mid-April/1904. Ink & color pencil on paper. 22 x 16 cm. Museu Picasso, Barcelona. Sebastià Junyer-Vidal Donation, 1966.

**OPP.04:040**; MPB:70.806; PP.04:013; Z.VI:488; BS.19:133p; CK.10:98; EC.16\*:56; EH.96:59p; JB.96:33; LI.00\*:n/a; MM.11a\*:71; MM.97\*:101; PA.01b\*:n/a; PA.19h\*:178; PA.21g:85p; PB.21:83; PB.81\*:8A.18; TO.94\*:171; TO.95a\*:181; TO.97\*:246; WR.80:47p; YP.13\*:12

**Sebastià Junyer-Vidal chez Durand-Ruel.** Paris. [1902] [1903] Mid-April/1904. Ink & color pencil on paper. 22 x 16 cm. Museu Picasso, Barcelona. Sebastià Junyer-Vidal Donation, 1966.

**OPP.04:041**; MPB:70.807; PP.04:014; Z.VI:489; CK.10:99; EC.16\*:56; JB.96:34; JR.91:295p; LI.00\*:n/a; MM.11a\*:71; MM.97\*:101; PA.01b\*:n/a; PA.19h\*:179; PB.21:84; PB.81\*:8A.19; TO.94\*:172; TO.95a\*:182; TO.97\*:247; WR.80:47p





**Pêtre Santol.** Paris. [Mid-April]/1904. Pen & ink on paper. 27,5 x 21,3 cm. Claude Ruiz-Picasso Collection.

**OPP.04:197**; P.I:1026; PP.0506:039; Z.VI:767; JR.91:296p;  
MM.97\*:102; RL.92\*:102

---

**Petits gueux.** Paris. [Late-Spring]/1904. Watercolor & ink on paper [OïC]. S/U. Private collection.

**OPP.04:072**; DB.XI:2; LD:115; P.I:966; PP.04:022;  
Z.I:219; PL.89:46





**Petits gueux.** Paris. [Late-Spring]/1904. Watercolor on paper [OiC] [Reverse of *Femme accoudée*]. 36,8 x 27 cm. Private collection. Formerly The Museum of Modern Art, NYC. Gift of Werner E. Josten.

**OPP.04:073**; DB.XI:3; LD:116; P.I:967; PP.04:021; Z.I:218; HK.65:22p; NY.57g\*:n/a; WR.72\*:26p

---

**Jeune homme à la boîte à lait.** Paris. [Late-Spring]/1904. Gouache on cardboard. [36,8 x 27] 62,5 x 45,1 cm. The Museum of Fine Arts, Houston. Gift of Oveta Culp Hobby, 1984. Formerly Gertrude Stein Collection.

**OPP.04:074**; DB.XI:1; LD:114; PP.04:023; Z.I:227; FA.70\*:35; MA.17b\*:78; NY.12a\*:289; SC.11\*:289





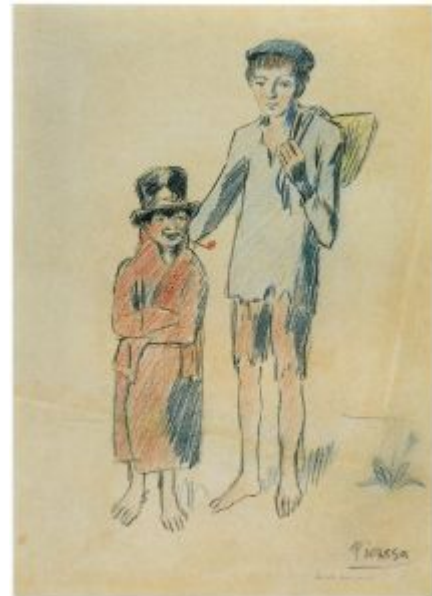
**Portrait de Gaby, Mme. Harry Baur.** Paris. [Late-Spring]/1904.  
Tempera on cardboard. 101,6 x 75,5 cm. Private collection, Paris.  
Formerly Matthiesen Gallery, London.

**OPP.04:077**; DB.XI:17; LD:134; P.I:980; PP.04:016; Z.I:215;  
AC.46:191; FO.90:1; RP.60\*:21; UP.00:125; WR.96:248p

---

**Enfants de la rue.** Barcelona [Paris]. [Late-Spring]/1904.  
Colored crayons. [38] 36 x 26,5 cm. Private collection,  
Switzerland. Formerly Thannhauser Foundation, NY.

**OPP.04:079**; DB.DXI:1; LD:113; PP.04:008; Z.I:185;  
AB.39a\*:21; CS.00\*:103p; HK.65:39p; KB.01\*:23;  
KZ.32\*:269





**Le vieillard et l'enfant.** Paris. [Late-Spring]/1904. Watercolor on paper. 36 x 26 cm. Private collection, Paris.

**OPP.04:081**; DB.DXI:3; LD:112; P.I:974; PP.04:038; Z.I:237;  
DT.78:11; JL.71:11p; PA.64b\*:243

---

**Profil de femme au chignon.** Paris. [Late-Spring]/1904. Pencil, India ink, charcoal & blue wash on paper. 37 x 26,7 cm. The Solomon R. Guggenheim Museum, NYC. (Inv 91.3913). Thannhauser Collection.

**OPP.04:087**; DB.DXI:12; LD:145; PP.04:027; Z.I:221;  
NY.44a\*:n/a; TC.92:82p







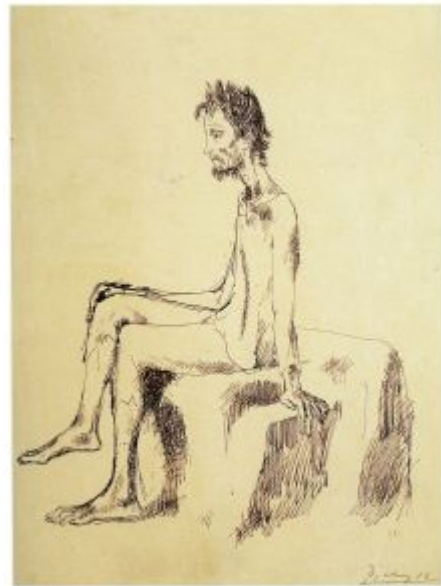
**Mendiant à la béquille.** Paris. [Late-Spring]/1904. Pen & ink & wash on paper. [36 x 24,8] 36,5 x 26,4 cm. Christie's. #430, 20651, 03/24/22.

**OPP.04:100**; P.I:950; PP.04:003; Z.I:223; Z.VI:411; GT.10:30.8; JR.91:299p; LB.58:38p; MR.21:2.5

---

**Le mendiant assis.** Paris. [Late-Spring]/1904. Pen & ink on paper. 34 x 26 cm. Private collection. Formerly Dora Maar Collection.

**OPP.04:102**; P.I:971; PP.04:026; Z.XXII:109; EM.55:20p; PA.98d\*:2





**Mendiant.** Paris. [Late-Spring]/1904. Watercolor on paper laid down on card. 37,3 x 26.8 cm. Christie's. #120, 2595, 11/08/12. Formerly Monsieur de Limour Collection, Paris.

**OPP.04:103**; LD:90; P.I:975; PP.04:024; Z.I:188

---

**Étude pour Le couple.** Paris. [Late-Spring]/1904. Conté crayon & wash on paper. 37 x 27 cm. Musée Picasso, Paris. Dation 1979.

**OPP.04:104**; DB.A:17; MPP:481; P.I:984; PP.04:029; Z.XXII:54; BF.21\*:235p; BL.91\*:34; CS.00:104p; IB.05\*:n/a; PA.19h\*:182; RK.01\*:n/a





**Mendiant à la béquille.** Paris. [Late-Spring]/1904. Pen, brown ink & color crayons on tan wove paper. 36,8 x 23,7 cm. The Art Institute of Chicago. (Inv 1985.466). Bequest of Mrs. Gordon Palmer.

**OPP.04:106**; PP.04:002; Z.I:222; BF.21\*:232p; HT.34\*:80; NY.30d\*:76

---

**La repasseuse (Étude).** Paris. [Late-Spring]/1904. Pen & brown ink on paper. 37,2 x 26,7 cm. Musée Picasso, Paris. Dation 1979.

**OPP.04:109**; MPP:480; PP.04:017; Z.XXII:48; BJ.19\*:n/a; BL.91\*:76; CK.10:108; EC.02:92; FF.05\*:n/a; JG.84\*:200; PA.19h\*:187; PA.21e\*:35; PA.79a\*:393; SP.06\*:n/a; WR.80\*:61p





**Mendiant à la béquille.** Barcelona. [Late-Spring/1904]. X-radiograph of oil on canvas [Underlayer of *La coiffure*]. 174,9 x 99,7 cm. The Metropolitan Museum of Art, NYC. (Inv 53.140.3). Catherine Lorillard Wolfe Collection, Wolfe Fund, 1951. Acquired from the Museum of Modern Art, Anonymous Gift, 1951.

**OPP.04:133**; GT.10:30.9

**Le couple (Les misérables).** Paris. [Late-Spring~Early-Summer]/1904. Oil on canvas. 100 x 80,5 cm. Merzbacher Kunststiftung, Küsnacht. Formerly B. Mayer Collection, Ascona, Switzerland; Thannhauser Collection.

**OPP.04:010**; DB.XI:5; LD:119; P.I:985; PP.04:030; Z.I:224; BS.19\*:145p; CG.93:76; JC.40:48p; JL.71:6p; KB.01:15; KZ.32\*:224; LB.58:30p; LU.64\*:228; MI.53\*:4; MM.11a\*:72; MM.67:9; MM.97\*:103; MR.53:27p; PA.19h\*:183; PA.67\*:n/a; PC.66:8p; RL.92\*:13; TB.10\*:7; TO.68:22; WW.91:109p





**Femme accoudée.** Paris. [Late-Spring~ Early-Summer]/1904 [~1905]. Blue watercolor on paper [Obverse of *Petits gueux*]. 27 x 36,8 cm. The Museum of Modern Art, NYC. Gift of Werner E. Josten.

**OPP.04:012**; DB.XI:4; LD:117; P.I:979; PP.04:020; Z.I:231; AB.57\*:19p; JG.84\*:202; NY.56h\*:19p; NY.62b\*:n/a; PH.58\*:n/a; TH.75:24; WR.72\*:27p

---

**Maternité.** Paris. Late-Spring~ Early-Summer]/1904. Pen & brown ink on paper. 16,8 x 10,3 cm. Bonhams. #28AR, 23578, 06/23/16. Formerly Mayoral Galeria d'Art, Barcelona. 2008; Christie's. #114, 1606, 05/05/05.

**OPP.04:045**; PP.0405:026; PA.11c\*:n/a





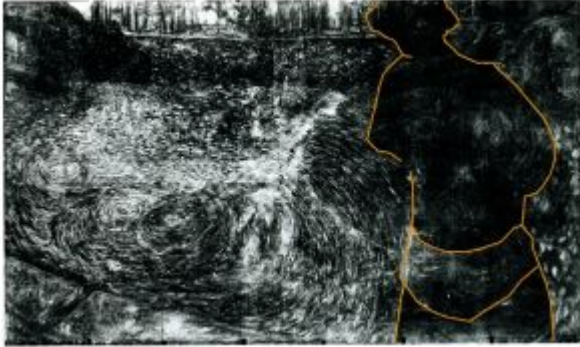
**Maternité (Couple et enfant)**. Paris. [Late-Spring~ Early-Summer]/1904. Pen & ink with blue wash on paper. 34,5 x 23,5 cm. Museum Sammlung Rosengart, Luzern. Siegfried & Angela Rosengart Collection.

**OPP.04:054**; DB.DXI:4; LD:120; P.I:969; PP.04:039; Z.I:238; PA.64b\*:242; RD.00\*:35; WS.95a\*:27

**Mère et enfants**. Paris. [Late-Spring~ Early-Summer]/1904. Ink on a sheet of Dictionnaire Anglais/Français par S. Stone. 21 x 13 cm. Private collection.

**OPP.04:112**; PP.04:054; Z.VI:612; RL.92\*:19





**Figure.** Paris. Pre-December/1904. X-radiograph of oil on canvas [Underlayer of *L'acteur*]. 196,1 x 115,1 cm. The Metropolitan Museum of Art, NYC. (Inv 52.175). Gift of Thelma Chrysler Foy, 1952.

**OPP.04:200**; GT.10:23.3

---

**Coups de pinceau.** Paris. Pre-December/1904. Oil on canvas [Reverse of *L'acteur*]. 196,1 x 115,1 cm. The Metropolitan Museum of Art, NYC. (Inv 52.175). Gift of Thelma Chrysler Foy, 1952.

**OPP.04:201**; GT.10:23.4





**Scène de Henri III et sa cour.** Paris. 1904~1905. India ink on paper. 32 x 25 cm. Private collection.

**OPP.04:198**; MM.97:217p

**Scène de Henri III et sa cour.** Paris. 1904~1905. Pencil on paper. 25 x 32 cm. Private collection.

**OPP.04:199**; MM.97:217p







**Femme au casque de cheveux (La femme de l'acrobate).**

Paris. [End-Spring]/1904. Gouache on wood pulp board. 42,7 x 31,3 cm. The Art Institute of Chicago. (Inv 1950.128). Bequest of Kate L. Brewster, 1950.

**OPP.04:026**; DB.XI:7; LD:131; P.I:977; PP.04:032; Z.I:233; AB.39a\*:24; AB.39a\*:24; AB.46:30p; AB.57\*:24p; AC.46:189; AP.11:29p; BR.30b\*:8; BS.19:134p; BS.55:24; CH.09\*:n/a; CH.29a\*:n/a; CH.30\*:10; CH.30c\*:n/a; CH.31b\*:n/a; CH.33b\*:21; CH.37b\*:117; CH.50\*:n/a; CH.55b\*:n/a; CH.68a\*:8; DC.91:60p; FP.73:189p; JC.56:261; JR.91:303p; LG.92:37; MM.97:43p; MR.21:3.13; NY.36a\*:16; PA.19h:186; PH.58\*:14; SA.54\*:7; SD.13a\*:7; TH.75:29; TO.68:24; TU.86\*:n/a; UP.00:139; WN.52\*:n/a; WR.80\*:60p; WR.96:245p; WW.91:106p

**Bonhomme assis (Al amigo Pablo [Gargallo]).**

Paris. 6-May/1904. Pen & brown ink on paper laid down on board. [29,7 x 22,1] 29,9 x 22,2 cm. Christie's. #128, 1996, 05/07/08. Formerly Woodner Family Collection.

**OPP.04:069**; P.I:973; PP.04:025; Z.VI:630; JR.91:301p; RL.92\*:10; TO.75\*:75





**Portrait de Sebastià Junyer-Vidal.** Paris. [June]/1904. Oil on paper [Obverse of [*Paysage*]]. 57,4 x 47,3 cm. Museu Picasso, Barcelona. Plandiura Acquisition, 1932.

**OPP.04:024**; DB.XI:15; LD:130; MPB:4.262; P.I:998; PP.03:118; Z.I:214; AC.46:156; BA.19\*:521; BA.20\*:67; BA.55\*:9; BX.84\*:n/a; DQ.74:121p; GE.56\*:6; GE.94\*:n/a; JP.66:100; LY.53a\*:10; MM.97\*:91; TO.95a\*:172; WW.91:107p

---

**La noche.** Paris. [Summer]/1904. India ink on paper. 11 x 16 cm. Private collection.

**OPP.04:203**; PP.04:105; Z.XXII:77





**Georgette.** Paris. [Summer~Fall]/1904. India ink on watercolored paper. 37,2 x 26,7 cm. Private collection.

**OPP.04:056**; PP.04:074; Z.VI:646; RL.92\*:21

---

**Caricature: bourdel.** Paris. [Summer~Fall]/1904. Black ink. 29,5 x 41 cm. Musée Picasso, Paris.

**OPP.04:060**; MPP:484; PP.04:104; Z.XXII:76; BA.03a\*:61; BL.91\*:100





**Caricature: le vernissage.** Paris.  
[Summer~Fall]/1904. Black ink. 29,3 x 41 cm.  
Musée Picasso, Paris. Dation 1979.

**OPP.04:061**; MPP:485; PP.04:107; Z.XXII:79;  
BA.03a\*:62; BL.91\*:101; JG.84\*:206;  
JR.91:357p; PA.19h\*:193

**Feuille d'études: formes géométriques et caricatures.**  
Paris. [Summer~Fall]/1904. Pen & India ink on paper. 18 x  
11,5 cm. Musée Picasso, Paris.

**OPP.04:062**; MPP:488; PP.04:069; BA.03a\*:66; BL.91\*:103





**Danse barbare.** Paris. [Summer~Fall]/1904. Pen & India ink on buff paper laid down on card. 23,5 x 30,5 cm. Sotheby's. #159, LN9775, 12/08/98. Formerly Sotheby's. #159, 12/02/92.

**OPP.04:068**; PP.04:063; Z.VI:619

---

**Couple et deux enfants.** Paris. [Summer~Fall]/1904. Pen & watercolor on paper [OIC]. 37x 26 cm. Private collection. Formerly Roger Dutilleul Collection, Paris.

**OPP.04:083**; DB.DXI:5; LD:121; P.I:968; PP.04:056; Z.VI:615



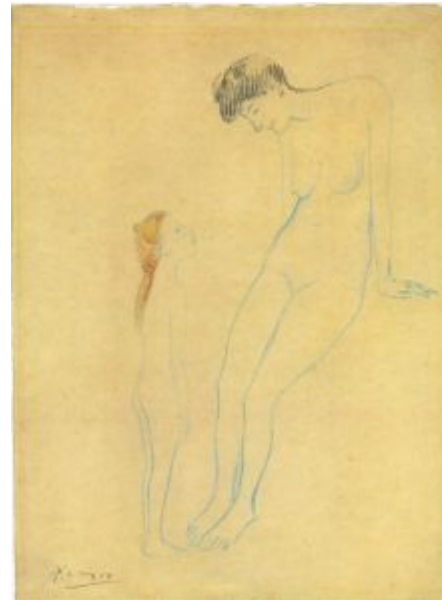


**Couple au cabaret.** Paris. [Summer~Fall]/1904. Pencil on paper. 21 x 28 cm. Private collection, Paris.

**OPP.04:089**; DB.DXI:17; PP.04:095; Z.XXII:477

**Mère et fillette.** Paris. [Summer~Fall]/1904. Blue crayon with touches of red & yellow on white paper. [36,8 x 29,6] 35 x 26,5 cm. Fogg Art Museum, Harvard University, Cambridge, MA. (Inv 1951.76). Bequest from the Collection of Maurice Wertheim, Class of 1906.

**OPP.04:091**; DB.DXI:19; LD:127; PP.04:072; Z.I:239; CM.46\*:69p; HK.65:81p; HO.62a\*:27; MN.58a\*:n/a; PH.57\*:n/a; QU.49\*:30; RA.60\*:67p; WA.53a\*:n/a





**Nu agenouillé.** Paris. [Summer~Fall]/1904. Watercolor & blue crayon on paper [OïC]. 34 x 24 cm. Fernand C. Graindorge Collection, Liège.

**OPP.04:093**; DB.DXI:21; LD:137; PP.04:073; Z.VI:632; KZ.60\*:n/a

---

**La belle qui passe.** Paris. [Summer~Fall/1904]. Pen & ink on paper. 29,2 x 40 cm. The Museum of Modern Art, NYC. Gift of Mr. and Mrs. Daniel Saidenberg.

**OPP.04:097**; PP.04:066; Z.VI:625; BS.55:10p; EB.70:13p





**Petits gueux.** Paris. [Summer~Fall]/1904 [1904~1905]. India ink on paper. 37 x 27 cm. The Picasso Estate.

**OPP.04:101**; P.I:964; PP.04:094; Z.XXII:120

---

**Études d'homme et femme.** Paris. [Summer~Fall]/1904 [~1905]. Pen, brush & black ink on tan wove paper, discolored to light brown, laid down on thin ivory Japanese paper. 25,3 x 33,5 cm. The Art Institute of Chicago. (Inv 1923.1058). Gift of Robert Allerton.

**OPP.04:107**; PP.04:070; Z.VI:628; CH.33a\*:1044; CH.44\*:n/a; CH.68a\*:60; CH.87\*:n/a







**Page d'album.** Paris. [Summer~Fall]/1904. Pen & black ink & brush & gray wash on paper. 36,8 x 26,5 cm. Christie's. #1003, 12070, 05/13/16.

**OPP.04:149**; PP.04:037; Z.I:236

---

**Nu debout et tête de profil.** Paris. [Summer~Fall]/1904. Pen & brown ink on paper. [23 x 10] 23,6 x 11,2 cm. Sotheby's. #4, L09109, 12/07/99.

**OPP.04:158**; PP.04:093; Z.XXII:118





**Étude pour la pièce de Gustave Coquiot et Jean Lorrain au Hôtel de l'Ouest, Chambre 22.** Paris. [Summer~Fall]/1904. Conté crayon on paper [Reverse of *Étude pour la pièce de Gustave Coquiot et Jean Lorrain au Hôtel de l'Ouest, Chambre 22*]. 38 x 27,5 cm. Private collection.

**OPP.04:162**; PP.04:089; Z.XXII:73

---

**Nu de dos.** Paris. [Summer~Fall]/1904. Graphite on paper. 18,5 x 11 cm. Private collection.

**OPP.04:175**; PP.04:092; Z.XXII:115





**Couple.** Paris. [Summer~Fall]/1904. Pen & ink on paper. 37,2 x 26,8 cm. Private collection.

**OPP.04:181**; PP.04:053; Z.VI:610

**Homme se promenant devant un bordel.** Paris. [Summer~Fall]/1904. Pen & ink on paper. 40 x 13,5 cm. Private collection.

**OPP.04:183**; PP.04:062; Z.VI:618





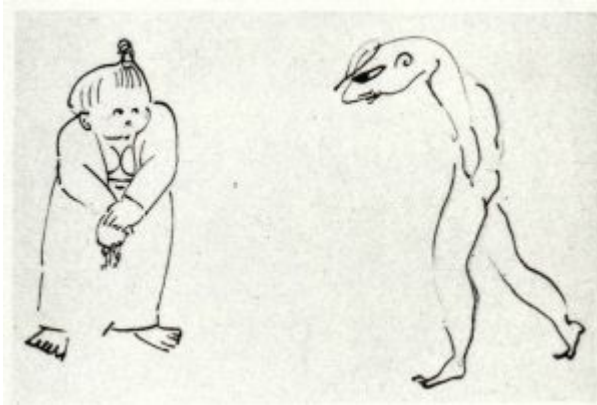
**Profil de femme.** Paris. [Summer~Fall]/1904. Graphite on paper.  
34 x 26,7 cm. Private collection.

**OPP.04:184**; PP.04:075; Z.VI:648



**Cocu.** Paris. [Summer~Fall]/1904. Pen & ink  
on paper. 21 x 22 cm. Private collection.

**OPP.04:185**; PP.04:064; Z.VI:622

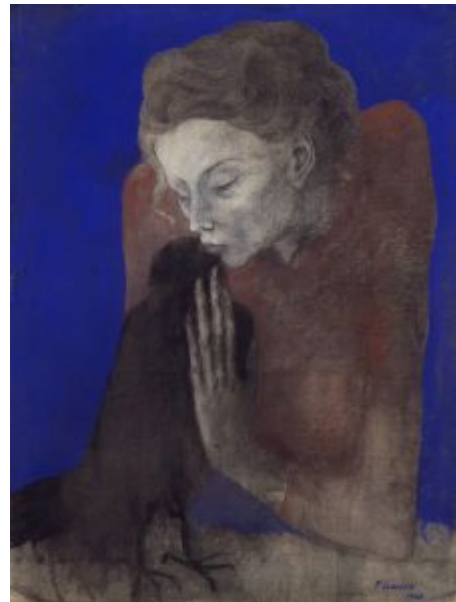


**Homme regardant une femme corpulente.**  
Paris. [Summer~Fall]/1904. Pen & ink on paper.  
29 x 39 cm. Private collection.

**OPP.04:187**; PP.04:065; Z.VI:624

**Femme à la corneille (Marguerite).** Paris.  
[Summer~Fall] [Mid-Summer]/1904. Gouache & pastel  
on paper pasted on cardboard. 60,5 x 45,5 cm. The  
Toledo Museum of Art. (Inv 1936.4). Purchased with  
funds from the Libbey Endowment, Gift of Edward  
Drummond Libbey, 1936.

**OPP.04:005**; DB.XI:10; LD:132; P.I:996; PP.04:041;  
Z.I:240; AB.39a\*:25; AB.39a\*:25; AB.46:30p;  
AB.57\*:24p; AC.46:193; BU.53\*:n/a; CH.37b\*:126;  
DC.91:47p; DT.78:13; EM.55:22p; GC.96:77p;  
GP.32\*:24; IW.93:19p; JF.96:44p; JL.71:210p;  
JP.11b:96p; JR.91:302p; KZ.32\*:22; LA.41a\*:40;  
LB.58:33p; LG.92:38; LY.53a\*:10; MD.02:64p;  
ME.44\*:n/a; MG.80:58p; MI.53\*:3; MM.11a:148p;  
MM.67:8; MM.97:43p; NY.36a\*:17; PA.05a\*:21;  
PA.19h\*:190; PA.35e\*:n/a; PH.58\*:n/a; SF.39b\*:40;  
SF.39b\*:40; TD.10\*:254p; TD.11\*:n/a; TD.38\*:89;  
TO.68:25; UP.00:140; WR.80\*:60p; WW.91:113p





**Femme à la corneille (Marguerite)**. Paris. [Summer~Fall] [Mid-Summer]/1904. Gouache & pastel on paper. 60,5 x 45,5 cm. Private collection, New York.

**OPP.04:013**; DB.A:7; LD:133; P.I:997; PP.04:042; Z.XXII:75; BS.19:140p; GB.87:28; IA.13:33p; PA.05a\*:21; PA.07a\*:111p; PD.09:53p; UP.00:141; WS.11:31p



**Les deux amies**. Paris. [Mid-Summer]/1904. Gouache on paper. [27 x 37] 55 x 38 cm. Private collection, Paris.

**OPP.04:019**; DB.XI:8; LD:138; P.I:976; PP.04:079; Z.VI:652; BS.19\*:146p; EM.55:23p; GB.87:29; JR.91:305p; LB.58:32p; MA.22b:89p; MJ.55\*:9; NW.70:21; PA.19h\*:217; PA.62a\*:n/a; UP.00:147; WW.91:109p



**Tête de femme (Madeleine)**. Paris. [Mid-Summer]/1904. Pen, black & sepia ink, frottage & pencil on vellum paper. 37,3 x 26,7 cm. Musée Picasso, Paris. Dation 1979.

**OPP.04:108**; MPP:479; PP.04:044; Z.VI:540; BD.16\*:3; BL.91\*:77; PA.79a\*:392

**Esquisse pour 'Hôtel de l'Ouest, Chambre 22' (Pièce de Jean Lorrain et Gustave Coquiot)**. Paris. [Mid-July]/1904. Watercolor & crayon on paper. 54,5 x 43,8 cm. Museum Ludwig, Köln. (Inv ML/Z 1994/022). Schenkung 1994. Formerly Paul Kantor Gallery, Beverly Hills; William Goetz Collection, Los Angeles.

**OPP.04:067**; DB.DXI:16; LD:147; PP.04:087; Z.I:213; AB.39a\*:28; CH.37a\*:35; DC.87:26; DT.37\*:118; JR.91:300p; MM.97:44p; NY.39c\*:11; RI.41\*:201; WO.92\*:8





**Étrangleur (pour la pièce 'Sainte Roulette')**. Paris. [Mid-July]/1904. Gouache, watercolor & pencil on paper. 72,3 x 59,4 cm. Sotheby's. #70, N08850, 05/02/12.

**OPP.04:088**; DB.DXI:14; LD:148; P.I:1009; PP.04:085; Z.VI:616; BO.00\*:9; NY.39c\*:11; NY.95a\*:2; PL.64\*:61

**La madone à la guirlande**. Paris. [Late-Summer]/1904. Gouache & watercolor on paper [Obverse of *Nus*]. [63 x 48] 63 x 48,1 cm. Christie's. #30A, 17658, 11/11/19. Formerly James and Marilyn Alsdorf Collection, Paris.

**OPP.04:021**; DB.XI:20; LD:129; P.I:990; PP.04:031; Z.I:229; JR.91:306p; UP.00:124







**Nus.** Paris. [Late-Summer]/1904. Blue ink on paper [Reverse of *La madone à la guirlande*]. 63 x 48,1 cm. Christie's. #30A, 17658, 11/11/19. Formerly James and Marilyn Alsdorf Collection, Paris.

**OPP.04:194**

**Arlequin (Étude).** Paris. Late-Summer/1904 ~ Early/1905. Ink on ledger paper [Obverse of *Liste des noms et adresses de Durrio, Canals, González et autres*]. 14,3 x 9,2 cm. The Metropolitan Museum of Art, NYC. (Inv 49.70.32) Alfred Stieglitz Collection, 1949.

**OPP.04:117**; PP.05:201; GT.10\*:24; JR.91:372p; PA.98b\*:n/a; RD.00\*:41





**Liste des noms et adresses de Durrio, Canals, González et autres.** Paris. Late-Summer/1904 ~ Early/1905. Ink on ledger paper [Reverse of *Arlequin (Étude)*]. 14,3 x 9,2 cm. The Metropolitan Museum of Art, NYC. (Inv 49.70.32). Alfred Stieglitz Collection, 1949.

**OPP.04:143**; GT.10\*:24b

**La chambre de la repasseuse.** Paris. [End-Summer]/1904. Pastel on paper. 37 x 51,5 cm. Christie's. #32, 11/02/93. Formerly Walter P. Chrysler, Jr. Collection, NY.

**OPP.04:011**; DB.DXI:11; LD:124; P.I:978; PP.04:019; Z.I:248; CH.39a\*:152; NY.37g\*:8; NY.39c\*:13; RI.41\*:152; TV.06:87p





**Les amants.** Paris. [Late-August]/1904. Pen, India ink, lead pencil & watercolor on paper. 37,2 x 26,9 cm. Musée Picasso, Paris. Dation 1979.

**OPP.04:020;** DB.DXI:13; MPP:483; P.I:986; PP.04:084; Z.XXII:104; AH.88:15; BL.91\*:80; DW.05:26p; HN.00\*:57; JC.01a\*:43; JR.91:308p; MM.97\*:W107; NM.95:102p; NS.01:297; PA.07a\*:100p; PA.19h\*:185; PA.22d:70p; PA.79a\*:395; PP.20\*:53; RP.06\*:91; SP.04\*:n/a; TK.04\*:n/a; UP.00:145

**Vase de fleurs.** Paris. [Late-May~Summer/1901] [Early-September]/1904. Oil on canvas. [65,1 x 50,2] 65 x 50 cm. Phillips. #13, UK010419, 06/27/19. Formerly Gemeentemuseum Den Haag. (Inv 1049752). Christie's. #15, 7857, 06/23/10; Christie's. #40, 1429, 11/03/04.

**OPP.04:044;** DB.V:27; P.I:991; PP.01:239; PP.04:046; Z.XXII:123; JR.14\*:41p; NY.11e\*:n/a; PA.67\*:238





**Portrait du sculpteur Manolo Hugué.** Paris. [Early-September]/1904. Pen, ink, India ink & watercolor on paper. 37 x 26 cm. Musée Picasso, Paris. Dation 1979.

**OPP.04:022**; DB.DXI:10; LD:150; MPP:482; P.I:995; PP.04:015; Z.I:211; AC.46:194; BL.91\*:81; FO.82:39p; JG.84\*:205; JL.66\*:14; MA.08a\*:n/a; MM.97\*:B111; PA.19h\*:184; PA.79a\*:394; PD.06\*:23p; PE.17\*:98p; PP.20\*:51; RD.00\*:33; SY.11\*:n/a

**La Suite des Saltimbanques L01 (Le repas frugal).**

Paris. [September]/1904. Etching & drypoint on paper, edition 20/250. 46,3 x 37,6 cm. Marina Picasso Collection. (Inv 13882). Courtesy Galerie Jan Krugier, Geneva. Also Pieter and Olga Dreesmann Collection, London, London. (Inv A008); The Art Institute of Chicago. (Inv 1963.825). Clarence Buckingham Collection.

**OPP.04:004**; B.I:1; Ba:2; MPB:110.011; P.I:994; AB.39a\*:26; AB.46:31; AC.46:195; AC.81:85p; AH.13\*:16; AP.89:40p; AP.97:50p; AS.60:29p; AU.89\*:8; BA.18\*:75p; BA.83b\*:n/a; BA.98b\*:n/a; BD.16\*:4; BF.21\*:T236p; BF.21:20p; BL.06\*:71p; BO.91\*:151; BP.62:128; BS.12\*:7; BS.19\*:149p; BS.55:368p; CH.03a\*:100; CH.04\*:2; CH.10\*:79p; CH.68a\*:108; CH.97:17p; CK.10\*:116; CR.98:118p; CS.00\*:104p; DK.61\*:113; DO.07\*:24; DT.78:14; EC.11\*:4.13; ED.07\*:2; EM.55:33p; FC.00\*:16; FL.11:74p; FL.86a\*:n/a; FM.84:14p; FO.82:58p; FP.73:126p; GC.96:76p; GM.81\*:2; GP.96:80p; GS.85\*:10; GT.10\*:P1; HG.71:51p; HJ.96:50p; HN.00\*:56; HS.98\*:150; IW.93:28p; JB.65:19; JG.13:44p; JG.84\*:204b; JL.14\*:3; JM.93:7p; JP.11b:98p; JR.86:25; JR.91:301p; KB.01\*:16; KR.11\*:82p; LB.58:46p; LG.86\*:18; LO.13a\*:n/a; LW.15\*:103p; MA.14\*:92; MA.17b\*:76; MA.22b\*:21; MA.23c\*:4; MA.93d\*:119p; MD.02\*:55p; ME.82a\*:5; MI.01\*:4; MM.11a\*:76; MM.97\*:W105; MS.24\*:30; MU.18:168p; NM.95:101p; OD.96:28p; OW.13:19p; PA.19h\*:181; PA.21g\*:40p; PA.22d\*:n/a; PD.09:43p; PJ.02\*:134; PL.89:42; PP.20\*:50; RL.89:38p; RL.92\*:12; RO.03\*:n/a; RS.88:10p; SD.13a\*:10; SG.06:16p; SN.92:13; ST.89\*:n/a; TH.75:22; TO.95b:69p; UP.00:143; VC.76:94p; VK.97\*:35p; etc.





**Le repas frugal.** Paris. September/1904. Etching & scraper. 46,3 x 37,8 cm. Göteborgs Konstmuseum, Göteborg. (Inv GKM 0699). Purchase 1922.

**OPP.04:023**; BF.21:20p

**Le repas frugal (I).** Paris. September/1904. Etching & scraper. 45,7 x 37,7 cm. Musée Picasso, Paris. Dation 1979.

**OPP.04:195**; Ba:2.1; MPP:1888; PA.79a\*:n/a





**Le repas frugal (II)**, Paris. September/1904. Etching & scraper. 46,3 x 37,8 cm. Musée Picasso, Paris. Dation 1979.

**OPP.04:196**; Ba:2.2; MPP:1889; BJ.19\*:n/a; PA.79a\*:n/a

**Projet d'affiche pour la pièce 'Sainte Roulette' (Théâtre Molière)**. Paris. [September~October]/1904. Gouache & watercolor on paper laid down on panel. 118,5 x 88 cm. Musée Picasso, Paris. Formerly Christie's. #27, 2352, 11/03/10.

**OPP.04:030**; DB.DXI:15; LD:149; MPP:2012.3; PP.04:086; Z.XXII:105; BJ.19\*:n/a; BO.00\*:10; BS.19:137p; DC.87:27; HS.94:32p; MA.17b\*:58; MM.97\*:117; PA.19h\*:170





**Le baiser.** Paris. 7-September/1904. Watercolor on paper. 36,5 x 26,5 cm. Göteborgs Konstmuseum, Göteborg. (Inv GKM 1568). Formerly H. G. Turitz Collection, Göteborg.

**OPP.04:033**; DB.XI:19; LD:146; P.I:987; PP.04:101; Z.XXII:119; HN.00\*:98; JC.01a\*:44; KS.65\*:32; RL.92\*:15

---

**Mère et enfant.** Paris. 7-September/1904. Brush & India ink. 37,4 x 26,6 cm. Private collection. Formerly Hahnloser Collection, Winterthur.

**OPP.04:096**; DB.DXI:25; P.I:988; PP.04:100; Z.XXII:93; JG.84\*:203; KB.01\*:17; KZ.32\*:273





**Mère et enfant.** Paris. 7-September/1904. Watercolor on paper [Oic]. 23,3 x 15 cm. Private collection.

**OPP.04:105**; P.I:989; PP.04:080; Z.VI:654

---

**Famille du cirque.** Paris. [Early-Fall]/1904. Pen & ink wash on paper. 36,7 x 26,5 cm. Private collection, Furtwangen. Formerly Sotheby's. #19, 11/08/94.

**OPP.04:046**; PP.04:055; KR.11\*:69p; MD.02\*:54p; RD.00\*:34; RD.96\*:61







**Homme nu debout et profils de têtes.** Paris. [Early-Fall]/1904.  
India ink on paper. 33 x 23 cm. The Picasso Estate.

**OPP.04:055**; P.I:1005; PP.04:060; Z.XXII:107; PA.05a\*:16;  
RL.92\*:11

**Caricature: danseurs et musicien.**

[Paris]. [Early-Fall]/1904. Pen & India ink.  
26,2 x 33,2 cm. Musée Picasso, Paris.  
Dation 1979.

**OPP.04:058**; MPP:491.r; PP.04:067;  
BA.03a\*:59; BL.91\*:104; PA.19h\*:195;  
PA.20j\*:37; WR.80:57p





**L'acteur.** Paris. [Early-Fall]/1904. Pen & brown in on lightweight brown wove paper. 32,3 x 24,8 cm. The Baltimore Museum of Art. (Inv 60.183:21). Philip B. Perlman Bequest.

**OPP.04:066**; PP.04:050; Z.VI:594; BH.06\*:24p; DC.87:28; VC.76:4

---

**Solitude.** [Paris]. [Early-Fall]/1904. Watercolor on paper [OIC]. 36 x 26 cm. Private collection. Formerly Walter P. Chrysler, Jr. Collection, NY.

**OPP.04:080**; DB.DXI:2; LD:111; P.I:970; PP.04:090; Z.XXII:106; CH.39a\*:25; NY.38c\*:2; NY.39c\*:2; RI.41\*:199





**Ménage et l'enfant.** Paris. [Early-Fall]/1904. Pencil & watercolor on paper. [35,5] 36 x 26 cm. Museum Ludwig, Köln. (Inv L/Z 2001/042). Schenkung 2001.

**OPP.04:084**; DB.DXI:6; LD:122; PP.04:057; Z.VI:704; MR.59\*:5; WO.92\*:7

---

**Le Christ de Montmartre (Le suicidé).** Paris. [Early-Fall]/1904. Pen & ink with watercolor. [36 x 26] 37,3 x 26,7 cm. Christie's. #9, 15483, 06/20/18. Formerly Foundation Prince M. Zurich; Suzanne Bollag Collection, Zurich.

**OPP.04:086**; DB.DXI:9; LD:118; P.I:1006; PP.04:061; Z.VI:617; AU.89\*:9; FR.65a\*:15; JR.91:317p; LU.64\*:229; MF.01:75p; MM.97:200p; PA.05c\*:16; PA.67\*:n/a; TO.94\*:167; WR.12b:72; ZU.59\*:2p





**Homme nu les bras levés et autoportrait de profil.** Paris. [Early-Fall]/1904. India ink on paper. 37,3 x 26,8 cm. The Picasso Estate.

**OPP.04:099**; DB.A:18; P.I:1007; PP.04:059; Z.XXII:110; BL.91:31p; PB.21:95; WR.12b:73

**Les saltimbanques.** Paris. [Early-Fall]/1904. Gouache, watercolor, and pen & black ink on paper. [36,2 x 26] 37,8 x 26,5 cm. The Abelló Collection. Formerly Christie's. #25A, 15977, 11/11/18; Haus Eppinghoven Collection.

**OPP.04:116**; PP.04:058; Z.XXII:112; NY.90f\*:8; PM.91:37p; WS.95a\*:20





**Femme de profil. Couverture d'album.** Paris. [Early-Fall]/1904. Oil & gouache on textured card laid down on board. 28 x 37,2 cm. Christie's. #133, 3443, 11/05/13. Formerly Marina Picasso Collection. (Inv 00566).

**OPP.04:123**; PP.04:097; Z.XXII:65; MB.84\*:16; MP.81\*:39; MP.83\*:22; MU.07a\*:174; RL.92\*:22; VE.81\*:48; VI.05\*:123

---

**Homme nue debout, une main posée sur la hanche (L'acteur).** Paris. [Early-Fall]/1904. Ink & wash on paper [Obverse of *Figure*]. 16 x 11 cm. Museum Würth, Künzelsau. (Inv 8040).

**OPP.04:130**; PP.04:119; Z.XXII:92; EC.11\*:4.15; RD.08\*:45p





**Personnage à l'épée.** Paris. [Early-Fall]/1904. Pen & ink on paper. 16 x 10,8 cm. Private collection.

**OPP.04:178**; PP.04:049; Z.VI:593

---

**Acrobate.** Paris. [Early-Fall]/1904. Pen & ink on paper. 23,5 x 15,5 cm. Private collection.

**OPP.04:179**; PP.04:051; Z.VI:602; WA.80a\*:24





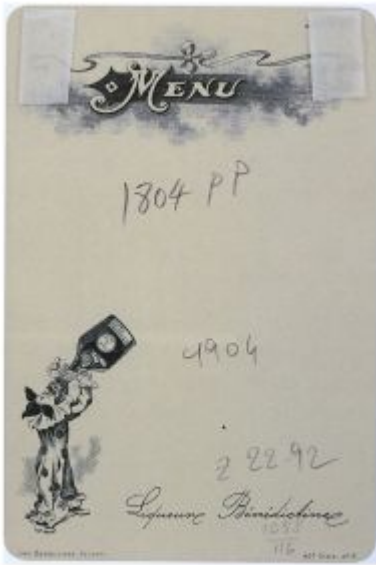
**Madeleine.** Paris. [Fall]/1904. Pastel & gouache on cardboard. 67 x 51,5 cm. Musée Picasso, Paris. Jacqueline Roque Picasso Collection. Dation 1990.

**OPP.04:027**; LD:328; MPP:1990.54; P.I:999; PP.04:103; Z.XXII:74; BL.91\*:115; GR.90\*:51; JR.91:302p; MA.08a\*:n/a; MD.02:60p; NM.95:106p; PD.06\*:22p; PD.94:34; RD.00\*:32; WR.96:244p

**La repasseuse.** Paris. Fall~Early-Winter/1904. Oil on canvas [Overlayer of *Le peintre (Ricard Canals)*]. 116,2 x 72,7 cm. The Solomon R. Guggenheim Museum, NYC. (Inv 78.2514.T41). Thannhauser Collection. Gift of Justin K. Thannhauser, 1978.

**OPP.04:002**; DB.XI:6; LD:125; P.I:982; PP.04:018; Z.I:247; AB.39a\*:27; AB.39a\*:27; AB.46:32p; AB.57\*:20p; AC.46:188; AC.81:86p; AM.75:32; AS.60:9; BS.19:134p; CG.12\*:1; CK.10\*:109; DT.78:10; EC.02:90; EC.16:62; GP.96:79p; HJ.83:53p; HJ.96:71p; JB.08:115p; JC.40:49p; JL.06:63p; JR.91:303p; JW.01:15p; MM.97\*:106; NY.41b\*:n/a; NY.44b\*:n/a; NY.47a\*:18; NY.65b\*:39; PA.19h:188; PD.09:55p; PD.65:39p; PD.94:26; RB.97:57p; SG.06:48p; TC.92:80p; TO.68:23; TV.06\*:2; UP.00:142; WR.80\*:60p; WW.73:50p; WW.91:114p





**Figure.** Paris. Fall~Winter/1904. Ink & wash on paper [Reverse of *Homme nue debout, une main posée sur la hanche (L'acteur)*]. 16 x 11 cm. Museum Würth, Künzelsau. (Inv 8040).

**OPP.04:142**

**Nu couché, le visage caché.** Paris. [Fall~Winter]/1904. Pen, ink & ink wash on paper. 23 x 33 cm. Sotheby's. #344, N08634, 05/06/10. Formerly Sotheby's. #357, N08486, 11/05/08; Sotheby's. #151, 06/28/78.

**OPP.04:057**; PP.04:129







**Caricature: le duel.** Paris. [Fall~Winter]/1904 [1905]. Black ink. 30 x 41,5 cm. Musée Picasso, Paris. Dation 1979.

**OPP.04:059**; MPP:486; PP.04:111; Z.XXII:83; BA.03a\*:60; BL.91\*:102; PA.19h\*:194

---

**Plusieurs personnages.** Paris. [Fall~Winter]/1904. India ink on paper. 32,5 x 25,5 cm. Private collection.

**OPP.04:063**; PP.04:113; Z.XXII:85; BA.03a\*:67; DO.07\*:23





**Loin du bal.** Paris. [Fall~Winter]/1904 [~1905]. Pen & India ink on paper. 18 x 11,7 cm. Musée Picasso, Paris.

**OPP.04:110**; MPP:492; PP.04:114; Z.XXII:86; BL.91\*:105

**Fernande dormante.** Paris. [Early-October]/1904. Lead pencil on paper. 37 x 27 cm. Private collection.

**OPP.04:132**; PP.04:076; Z.VI:649; WR.96:15p



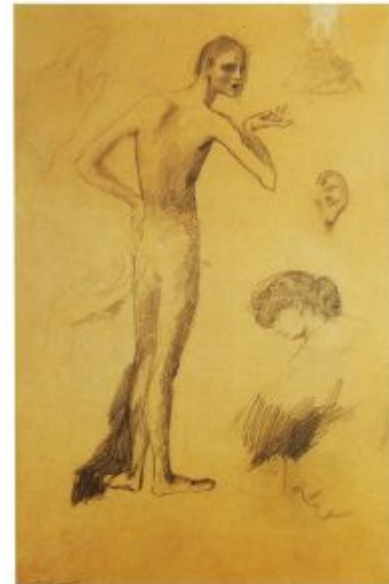


**Le fou (L'idiot) (A mi buen amigo Sebastià Junyent).** Barcelona. [Late-October]/1904. Blue watercolor on wrapping-paper. 85 x 35 cm. Museu Picasso, Barcelona. Formerly L. Plandiura Collection.

**OPP.04:001**; DB.X:6; LD:108; MPB:4.272; P.I:948; PP.04:001; Z.I:232; AB.46:29p; AC.81:84p; AP.89:39p; AP.97:48p; AR.57\*:8; BA.09d\*:n/a; BA.55\*:15; BA.95a\*:n/a; BS.55:367p; CR.98:65p; DT.78:12; GE.56\*:29; JC.06:11; JF.94a:18; JL.71:4p; JP.66:101; JR.91:279p; MA.14:93; MA.22b\*:14; MM.00:30p; MM.97:199p; PA.04a\*:39; PA.19h\*:162; PA.60b\*:550; PD.09:39p; PD.65:24p; RI.41\*:151; RL.92\*:7; RS.88:33p; TO.68:21; TO.95b:39p; TO.97\*:242; TU.86\*:n/a; UP.00:137; WS.11:29p

**L'acteur et têtes de Fernande (Étude).** Paris. Late/1904 [Winter/1904~1905]. Graphite pencil on paper. 48,3 x 31,7 cm. The Metropolitan Museum of Art, NYC. Formerly Sotheby's. #410, 6489, 11/04/93; Sotheby's. #7, 05/13/92; Mr. and Mrs. Sidney E. Cohn Collection, NY.

**OPP.04:050**; DB.XII:2; LD:154A; P.I:1018; PP.05:001; Z.VI:681; AB.57\*:24p; BP.62:139; DC.91:63p; EB.70:23p; FA.70\*:n/a; FW.67\*:146; GT.10:23.1; JR.91:315p; MM.97:44p; NY.12a\*:287; OS.56\*:n/a; PA.54f\*:19; PH.58\*:n/a; SC.11\*:287; UP.00:151; WR.80\*:54p





**L'acteur: homme debout (Étude)**. Paris. [Late]/1904. Pen & India ink on laid paper. 17,5 x 11,3 cm. Grisebach GmbH. #236R, 190, 11/25/11.

**OPP.04:128**

**Le nu endormi (Meditation)**. Paris. [August~] [Late-Fall]/1904. Pen, ink & watercolor on paper. 36,8 x 27 cm. The Museum of Modern Art, NYC. Louise Reinhardt Smith (Mrs. Bertram Smith) Bequest.

**OPP.04:016**; DB.XI:12; LD:141; P.I:1004; PP.04:036; Z.I:235; AB.57\*:23p; AC.46:192; AC.81:38p; BS.19:137p; CE.90:5; CR.84:87p; DF.10:25p; JF.94a:21; JL.67b:21p; JL.71:9p; JR.62\*:1.20; JR.91:316p; JW.72:18p; LS.75:40; MF.95:16; MG.80:61p; MI.01\*:5; MM.97\*:110; NM.95:103p; NY.36a\*:18; PA.19h:169; PA.22d:76p; PB.21:90; PH.58\*:16; PI.03:3; RP.81:3.3; TH.75:28; TO.64\*:18; UP.00:146; VK.97\*:33p; WR.72\*:31; WR.80\*:61p; WR.96:133p; WS.88:103; WW.91:112p; YP.13:83p





**Le nu endormi.** Paris. [Late-Fall]/1904. Pen, ink & watercolor on paper. 36 x 26 cm. Jacques Helft Collection, Paris.

**OPP.04:017**; DB.XI:11; LD:140; P.I:1001; PP.04:033; Z.I:234;  
AT.84:26; JL.71:8p; JR.91:316p; LS.75:41; MM.97\*:109;  
MM.97:294p; NM.95:134p; WR.80\*:61p

---

**Les deux amies.** Paris. Late-Fall/1904.  
Graphite & watercolor on cream wove  
paper. 27 x 37 cm. Private collection, Paris.

**OPP.04:018**; DB.XI:9; LD:139; P.I:1000;  
PP.04:102; Z.XXII:63; GT.81\*:13;  
JR.91:305p; MD.02:61p; PD.09:47p;  
PD.93:11; UP.00:148; WR.80\*:64p





**Le couple.** Paris. Late-Fall/1904. Pen, ink & watercolor on paper. [35,5] 33 x 26 cm. Museum Ludwig, Köln. (Inv ML/Z 1994/021). Schenkung 1994. Formerly Ludwig Collection, Aachen; Galerie Beyeler, Basel.

**OPP.04:034**; PP.04:034; RL.92\*:16; WO.92\*:6

**Femme couchée.** [Paris]. [1901] [1902~1903] [Late-Fall]/1904 [~1905] [~1906]. Ink & watercolor on paper. 16 x 22 cm. Národní Galerie, Prague. Donation Krámar, (Inv 33787). Formerly Vincenc Kramář Collection. Purchased from Clovis Sagot, 05/11.

**OPP.04:042**; DB.A:11; PP.0203:052; JP.60:3r; PS.05:2; VK.02:47





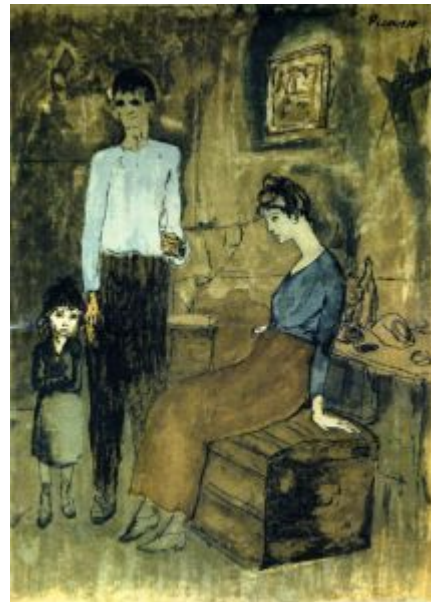
**Études de personnages.** [Paris]. [Late-Fall]/1904 [~1905]. Watercolor, pen & ink on paper. [24,8 x 31,7] 25,7 x 32 cm. Sotheby's. #450, L04010, 06/22/04. Formerly Sotheby's. #25, 06/27/95; Sotheby's. #23, 04/04/89.

**OPP.04:043**; PP.0405:032; HM.86\*:35

---

**La saisie (Les misérables).** Paris. Late-Fall/1904. Pen, ink & gouache on cardboard. S/U. Private collection, Paris.

**OPP.04:070**; DB.DXI:7; LD:123; P.I:1002; PP.04:040; Z.XXII:121; IA.13:53p; MM.11a:158p; UP.00:144





**Homme et femme à sa toilette.** Paris. Late-Fall/1904.  
Watercolor, pastel & India ink. 35 x 23 cm. Galerie Schmit, Paris.

**OPP.04:085**; DB.DXI:8; LD:327; P.I:1003; PP.04:120; Z.XXII:94;  
PD.94:47

---

**Le poète.** Paris. [Late-Fall]/1904. Pen & black ink, brush  
& gray wash & watercolor on paper. 37,3 x 26,8 cm.  
Evergreen House Foundation. The Johns Hopkins  
University, Baltimore.

**OPP.04:138**; PP.04:035; MM.97\*:108; VC.76:2







**Le couple.** Paris. [Late-Fall]/1904. Watercolor & ink on paper. S/U. Musée Angladon, Avignon. Collection Jacques Doucet.

**OPP.04:150**

---

**Jeune Pierrot.** Paris. [Late-Autumn/1904]. Digital X-radiograph of oil on canvas [Underlayer of *Jeune femme en chemise (Madeleine)*]. 72,7 x 60 cm. Tate Modern, London. (Inv N04720). C. Frank Stoop Bequest, 1933.

**OPP.04:155**





**Portrait de Suzanne Bloch.** Paris. [End-Autumn]/1904. Oil on canvas. 65 x 54 x 2,3 cm. Museu de Arte, São Paulo. (Inv MASP.00142). Doação Walther Moreira Salles, 1947. Formerly Sichowski Collection, London; Bieber Collection, Lugano.

**OPP.04:028;** DB.XI:18; LD:136; P.I:981; PP.04:123; Z.I:217; BE.39\*:n/a; BR.30c\*:n/a; BU.54\*:60; CG.93:240; CH.41c\*:120; HS.94\*:46; JC.59:21p; LA.41a\*:36; LG.92:36; MD.02:56p; MI.55\*:n/a; MM.97:42p; MU.13b\*:n/a; NY.56i\*:n/a; PA.05a\*:n/a; PA.53a\*:n/a; RL.92\*:17; SF.40a\*:n/a; TO.68:26; WA.42\*:n/a; WW.91:106p

**Portrait de Suzanne Bloch.** Paris. [End-Fall]/1904. Pen, India ink & sepia wash on paper. 14,6 x 13,3 cm. Christie's. #0140, 7407, 06/19/07. Formerly Sotheby's. #174, L05009, 06/21/05; Sotheby's. #2, 12/07/99; Sotheby's. #404, 6489, 11/04/93; Christie's. #413, 12/03/85.

**OPP.04:035;** DB.XI:16; LD:135; P.I:983; PP.04:124; Z.XXII:103; FR.65a\*:23; LP.99:41p; MD.02:56p





**Picasso et Max Jacob.** Paris. [End-Fall]/1904.  
Ink on paper (letter to Suzanne Bloch). S/U.  
Private collection.

**OPP.04:134**; PP.04:122; HS.94:32p; MD.02:58p;  
PB.21:93; WR.96:193p

**Portrait de Suzanne Bloch.** Paris. [End-Fall]/1904. Pen  
& ink & ink wash on paper. 17,4 x 13,2 cm. Sotheby's.  
#115, N09036, 11/07/13.

**OPP.04:137**





**Portrait de Suzanne Bloch.** Paris. [End-Fall]/1904. Pen & ink & ink wash on paper. 17,4 x 13,2 cm. Private collection.

**OPP.04:156**

**Dédicace 'À mes chers amis Suzanne et Henri Bloch'.** Paris. [End-Fall]/1904. Ink on photograph. S/U. Musée Picasso, Paris. (Inv FPPH130).

**OPP.04:193;** MM.97:41p





**Femme au châle rouge (Suzanne Bloch)**. Paris. December/1904. Watercolor, pen & ink on paper. 17,1 x 11,1 cm. Pieter and Olga Dreesmann Collection, London. (Inv A006). Formerly Sotheby's. #6, 12/07/99; Sotheby's. #177, 05/12/94.

**OPP.04:032**; PP.04:125; MD.02\*:57p; NS.71\*:94; PA.20j:123p

---

**Portrait de l'artiste assis (Autoportrait à la pipe) (à Sebastià Junyent)**. Paris. December/1904. Pen & ink, ink wash & gouache on paper. 17,1 x 21,6 cm. Sotheby's. #441, N09931, 11/13/18. Formerly Sotheby's. #112, N09140, 05/08/14; Junyent Collection, Barcelona.

**OPP.04:095**; DB.DXI:28; LD:152; P.I:1010; PP.04:126; Z.XXII:113; NY.86b\*:9; PB.21:87; WR.80:57p





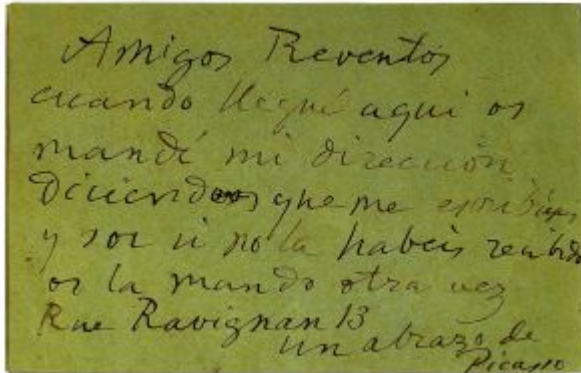
**Octavio Canals.** Paris. December/1904. Pen & ink on paper. S/U. Private collection.

**OPP.04:119**; PP.04:052; Z.VI:608; FO.82:33p; MR.21:2.4

**Carte postale adressée à Jacint et Ramón Reventós.** Paris. December/1904. Ink on postcard. S/U. Dr. Jacint Reventós i Conti Collection, Barcelona.

**OPP.04:140**; TO.95a\*:213





**Carte postale adressée à Jacint et Ramón Reventós.** Paris. December/1904. Ink on postcard. S/U. Dr. Jacint Reventós i Conti Collection, Barcelona.

**OPP.04:141**; TO.95a\*:213

---

**L'acteur.** Paris. [Late] December/1904 ~ January/1905. Oil on canvas [Obverse of *Coups de pinceau*] [Overlayer of *Figure*]. 196,1 x 115,1 cm. The Metropolitan Museum of Art, NYC. (Inv 52.175). Gift of Thelma Chrysler Foy, 1952.

**OPP.04:029**; DB.XII:1; LD:154; PI:1017; PP.05:002; Z.I:291; AB.39a\*:29; AB.46:33p; BH.06\*:252p; BS.19:140p; CG.93:39; CO.12a\*:216; DC.87:36; DC.91:62p; EC.02:93; FP.73:198p; GC.96:80p; GT.10\*:23; JL.51:12; JM.93:30p; JR.91:338p; LA.41a\*:31; MM.12:123p; MM.97:218p; MR.21:3.18; PA.19h:196; PD.19:31p; PM.91:3; RM.94:16p; RP.81:3.1; RS.88:40p; TO.68:27; UP.00:149; WR.80\*:54p; WW.91:114p





**Mère et enfant et études de mains.** Paris. [Winter] End/1904. Black crayon on tan wove paper [Obverse of *Autoportrait de trois-quarts*]. 33,8 x 26,7 cm. Fogg Art Museum, Harvard University, Cambridge, MA. (Inv 1965.318). Bequest of Meta and Paul J. Sachs.

**OPP.04:051**; DB.DXI:26; LD:155A; P.I:1019; PP.04:128; Z.I:220; AB.39a\*:23; AB.46:29p; AC.46:190; AS.60:27p; BP.62:133; CM.01\*:26; CM.43\*:18p; CM.65\*:65; CM.65\*:66; DB.89:13p; DC.91:61p; DT.41\*:54; DT.41a\*:54; DT.78:9; EM.55:24p; GM.11\*:16; GP.96:82p; GT.81\*:12b; HK.65:70p; HO.55\*:3; HO.55\*:3; HT.34\*:82; IW.93:22p; JL.67b:22p; JL.71:12p; JR.91:306p; NM.95:107p; NY.39i\*:16; NY.39i\*:n/a; NY.44a\*:95p; NY.47e\*:n/a; NY.52j\*:n/a; PV.57\*:n/a; RI.52\*:n/a; RL.92\*:18; RT.58\*:196; SA.54\*:6; SA.54\*:6; SL.33\*:n/a; SR.43\*:n/a; TH.75:25; TO.64\*:20; WA.40a\*:26; WA.53a\*:n/a; WR.80\*:62p; WW.91:111p

**Fleurs dans un vase bleu.** Paris. [End]/1904. Gouache & watercolor on wood. 61,5 x 47 cm. Memorial Art Gallery of the University of Rochester. Gift of James Sibley Watson.

**OPP.04:075**; DB.XI:13; LD:144; P.I:993; PP.04:045; Z.I:241; BF.21\*:240p







**Vase de fleurs.** Paris. [End]/1904. Gouache on paper [OIC]. [61,5 x 46,5] [61,5 x 47] 62 x 47 cm. Sotheby's. #1, 05/11/87. Formerly William Goetz Collection, Los Angeles.

**OPP.04:076**; DB.XI:14; LD:143; P.I:992; PP.04:047; Z.XXII:122

---

**Pierrot à la main levée.** Paris. [End]/1904. India ink on paper [Obverse of *La mort d'arlequin (Étude)*]. 23,5 x 15 cm. Christie's. #629, 22159, 10/11-24/23.

**OPP.04:167**; PP.04:115; Z.XXII:87





**La mort d'arlequin (Étude).** Paris. [End]/1904. India ink on paper [Reverse of *Pierrot à la main levée*]. 23,5 x 15 cm. Christie's. #629, 22159, 10/11-24/23.

**OPP.04:204**

**Au Lapin Agile (Arlequin au verre).**

Paris. Winter/1904~1905 [Early/1905]. Oil on canvas. 99,1 x 100,3 cm. The Metropolitan Museum of Art, NYC. (Inv 1992.391). The Walter H. & Leonore Annenberg Collection. Partial Gift of Walter H. & Leonore Annenberg, 1992. Walter H. & Leonore Annenberg Bequest, 2002. Formerly Sotheby's. #31, 5928, 11/15/89; Charles S. Payson Collection, Manhasset, NY.

**OPP.04:031**; DB.XII:23; LD:197; P.I:1012; PP.05:035; Z.I:275; AB.07:10p; AC.81:9p; AH.13:26; BA.18:76p; BH.06\*:252p; BP.62:137; BS.19:168p; CG.93:50; DC.87:35; DC.91:72p; DL.67\*:8; DO.07\*:n/a; EC.02:5; EH.96:68p; EV.08:10; FL.11:91p; GP.96:81p; GT.10\*:25; HJ.83:55p; HJ.96:73p; JB.65:20; JB.96:43; JC.98:90p; JL.71:210p; JP.11b:102p; JR.62\*:1.16; JR.91:368p; JW.72:96p; KR.11:34p; KY.80\*:66; MA.17b:57p; MM.11a:147p; MM.97:202p; MR.59\*:6; NC.10:6; NM.95:168p; NY.08b\*:n/a; NY.21g:16p; NY.57d\*:n/a; NY.58i\*:102; NY.60f\*:86; NY.68b\*:148; NY.76c\*:94; OD.13:71p; PA.20j:62; PA.21g:77p; PB.21:97; PD.09:58p; PD.93:14; PD.94:32; PH.89\*:118p; PJ.02:79p; RP.81:1.9; RT.14:107; SG.06:50p; SR.15:3; TO.68:40; UP.00:160; UW.84:62p; WA.80a:33; WE.78\*:53; WR.12b:81; WR.96:131p; WW.73:54p; WW.91:128p; YP.13:83p





**Le saltimbanque.** Paris. [Winter]/1904~1905. Pen, ink, brush & gouache on board. 61,9 x 47 cm. Sotheby's. #222, NY7648, 05/10/01. Formerly Christie's. #34, 06/25/90.

**OPP.04:036**; PP.05:025; EY.97:3; GP.32\*:n/a; LO.38e\*:52; MJ.55\*:8; MM.97\*:120; MM.97:199p; PA.05a\*:n/a; PA.51b\*:n/a



**Jean Moréas gras (Pour Zervos).** Paris. [1901] [1902] Winter/1904. India ink on paper [Reverse of *Paul Fort gras*]. 31,5 x 24 cm. The Picasso Estate.

**OPP.04:047**; P.I:1013; PP.0405:019; Z.XXI:388; JR.91:360p



**Paul Fort gras.** Paris. [1901] [1902] [Winter/1904~1905]. India ink on paper [Obverse of *Jean Moréas gras (Pour Zervos)*]. 31,5 x 24 cm. The Picasso Estate.

**OPP.04:048**; P.I:1014; PP.0405:020; Z.XXI:415

**Portraits de Paco Durio et Portrait de Fernande dansant.** Paris. [Winter]/1904~1905. Lead pencil & blue pencil on paper. [24,5 x 33] 25 x 32,7 cm. Private collection.

**OPP.04:049**; P.I:1015; PP.05:357; Z.XXII:303; JR.91:460p; PD.94:9; RL.92\*:39a





**Le banlieu.** Paris. [Winter]/1904~1905. India ink. 9,5 x 16,5 cm. The Picasso Estate.

**OPP.04:052**; P.I:1024; PP.0405:023; Z.XXII:101

**Jeune femme en chemise (Madeleine).** Paris. [Winter/1904~1905]. Oil on canvas [Overlayer of *Jeune Pierrot*]. 72,7 x 60 cm. Tate Modern, London. (Inv N04720). C. Frank Stoop Bequest 1933.

**OPP.04:053**; DB.XII:5; LD:157; P.I:1050; PP.05:003; Z.I:307; AC.81:88p; AM.11\*:98; AM.67\*:7; AS.60:7; BS.12\*:3; BS.19\*:152p; CG.93:66; DC.91:64p; GP.32\*:31; GP.96:83p; IW.93:23p; JC.59:20p; JL.51:11; JL.66\*:22; JM.93:34p; JP.11b:99p; JR.91:304p; KR.11\*:79p; KZ.32\*:31; LO.18\*:n/a; LO.21\*:8; LO.28\*:43; LO.31\*:7; LP.33\*:597; LP.99:43p; MA.17b:64p; MA.81b\*:38; MM.97\*:112; NH.94:15p; NM.95:107p; PA.19h\*:211; PD.94:41; RB.97:55p; RL.92\*:31; RP.60\*:22; RR.09\*:8; RS.88:46p; TB.10\*:11; TH.75:27; TV.06\*:3; UP.00:153; WR.96:246p; WW.91:122p





**Caricatures.** Paris. [Winter]/1904~1905. India ink. 18 x 11,3 cm. Private collection.

**OPP.04:064;** PP.0405:021; BA.03a\*:68



**Caricatures.** Paris. [Winter]/1904~1905. India ink & blue pencil. S/U. Private collection.

**OPP.04:065;** PP.0405:022; BA.03a\*:69



**Mère et enfant.** Paris. [Winter/1904] [Early/1905]. Watercolor & India ink on paper [Obverse of *Portrait de Fernande*]. [35,5] 35,3 x 25,3 cm. Museum of Fine Arts, Budapest. (Inv 1918.461). Gift of Ferenc Hatvany, 1918.

**OPP.04:078**; DB.XI:21; LD:128; P.I:1022; PP.05:187; Z.XXII:64; BD.16\*:5; BD.22\*:n/a; BD.33\*:n/a; BD.34\*:n/a; BD.36\*:n/a; BD.59\*:n/a

---

**Autoportrait à la pipe.** Paris. [Fall] Winter/1904~1905. Watercolor & India ink on paper. [17 x 10,5] 17,5 x 11 cm. Nationalgalerie, Museum Berggruen, Staatlichen Museen zu Berlin. (Inv NG MB 4/2000). Formerly Maison de la Chimie. #1, 10/27-28/98.

**OPP.04:082**; DB.DXI:29; LD:153; P.I:1008; PP.04:127; Z.XXII:111; AR.57\*:9; BL.06\*:67p; LB.58:29p; LE.21\*:3; LO.56a\*:n/a; PA.98d\*:1; PB.21:96; YP.13:82p





**Portrait de Max Jacob.** Paris. [Winter]/1904~1905. Ink on paper [Reproduced in *Portrait de Max Jacob (Max Jacob, Le Cornet à dés)*]. 25,8 x 20,1 cm. M. L. Collection, Paris.

**OPP.04:092;** DB.DXI:27; PP.0405:024; Z.XXII:124; HS.94:30p; JR.91:329p; MM.11a:156p; MM.97:211p; NM.95:82p

**Homme assis (Étude).** Paris. [1901] [1903] Winter/1904~1905. Pen & bistre on paper. [34 x 23] 34,3 x 23,5 cm. Sotheby's. #826, 05/22/81. Formerly Lionel Prejger Collection, Paris.

**OPP.04:094;** DB.DXI:22; PP.0405:018; Z.XXI:160; BO.00\*:8; DC.91:52p; FR.65a\*:17; PA.66a\*:27







**Scène de cirque.** Paris. [Winter]/1904~1905. Pencil, sanguine, black watercolor on velin [Reverse of *Nu assis aux bras croisés*]. [14] 17 x 21,5 cm. Musée Picasso, Paris.

**OPP.04:111**; MPP:460.v; PP.0405:027

**Amis espagnols de l'artiste.** Paris. Winter/1904~1905. India ink & blue pencil on paper [Obverse of *Portraits de Paco Durio et Portrait de Fernande dansant*]. 25 x 32,7 cm. Private collection.

**OPP.04:114**; PP.05:356; Z.XXII:299; RL.92\*:39b





**Plusieurs personnages.** Paris.  
[Winter]/1904~1905. India ink on paper. 30,6 x  
41,5 cm. Private collection.

**OPP.04:115**; PP.04:112; Z.XXII:84; RL.92\*:40

---

**Profil de femme.** Paris. [Winter]/1904. Pen & black ink,  
brush & gray wash on paper mounted on board. 22 x 16  
cm. Christie's. #502, 9036, 11/19/98.

**OPP.04:121**; PP.04:077





**Nu, profil gauche.** Paris. [Winter]/1904. Pen & India ink & wash on paper. 37 x 27 cm. Sotheby's. #541, L16005, 02/05/16. Formerly Marina Picasso Collection. (Inv 00567).

**OPP.04:124**; PP.04:078; Z.VI:650; JR.93\*:7; LO.88a\*:19; MB.84\*:17; MP.81\*:38; MP.83\*:23; PD.02\*:11; RL.92\*:23; TL.89\*:14; VC.89\*:14; VE.81\*:46

---

**Saltimbanques.** Paris. [Winter]/1904~1905. Pencil, black ink & crayon on brown card. 43 x 57,4 cm. Nationalgalerie, Kupferstichkabinett, Staatliche Museen zu Berlin. (Inv F III 2477. SZ 1).

**OPP.04:126**; PP.05:044; DO.07\*:49; HN.00\*:19; RD.00\*:36





**L'écuyère.** Paris. [Winter]/1904~ [Spring/1905].  
Pen & black ink on buff paper. [30,4 x 40,4] 30,2 x  
40,3 cm. Viviane Bregman Fine Art. 2013.  
Formerly Sotheby's. #370A, N08851, 05/03/12;  
Viviane Bregman Fine Art. 2008; Sotheby's. #131,  
N08127, 11/03/05; Christie's. #138, 05/18/83.

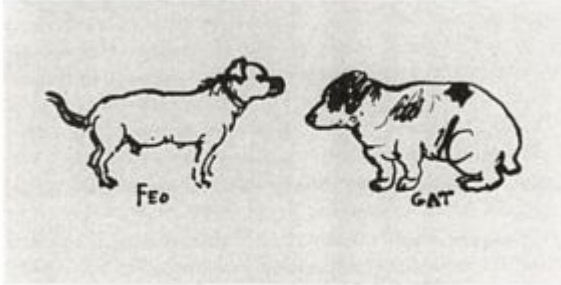
**OPP.04:127**; PP.05:309; DO.07\*:53; RD.00\*:39

---

**Une très belle danse barbare.** Paris.  
[Winter]/1904~1905. Ink on paper. 28,6 x 40,3 cm.  
Private collection.

**OPP.04:139**; PP.0405:007; Z.VI:621; JR.91:401p;  
NY.12a\*:281; SC.11\*:281





**Feo et Gat.** Paris. [Winter]/1904~1905. Pen on paper. S/U. Private collection.

**OPP.04:146**; PP.0405:028; JR.91:296p

---

**Ángel Fernández de Soto au café (L'apéritif).** Paris. [Fall/1901] 1904. Watercolor on paper. 43,3 x 34,3 cm. Columbus Museum of Art, OH. Formerly Ferdinand Howald Collection.

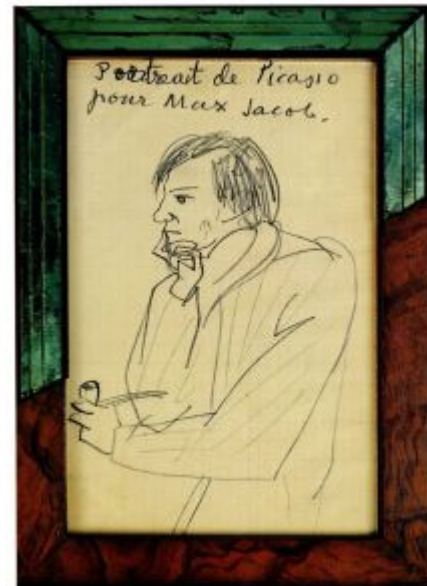
**OPP.04:090**; DB.DXI:18; LD:151; PP.01:436; Z.XXI:163; CI.58\*:n/a





**Ricard Canals dans son atelier.** Paris. 1904. Gelatin silver print [Obverse of *Annotation*]. 15,3 x 10,7 cm. Musée Picasso, Paris. (Inv APPH 2802).

**OPP.04:120**; AB.12\*:48p; AB.97b\*:5; AC.09:105p; AM.01:5.4; BA.19b\*:51p; BM.05:131p; CK.10:291; EC.16:63; PB.21:89; PS.08:85p; YP.13\*:B



**Autoportrait.** Paris. 1904. Graphite pencil on squared paper. 20,9 x 13,1 cm. Nationalmuseum, Stockholm.

**OPP.04:144**; PP.04:083; HS.94\*:45



**Autoportrait avec son chien Feo.** Paris. 1904. Pen on paper. S/U.  
Private collection.

**OPP.04:147**; PP.04:081; Z.I:196; JR.91:298p; PB.21:72



**Le Père Soulier.** Paris. [1904]. Pen on paper. S/U.  
Private collection.

**OPP.04:148**; JR.91:353p



**Le couple (Les misérables)**. Paris. 1904. Charcoal on paper. 34,5 x 25,5 cm. Hamburger Kunsthalle, Hamburg. Klaus und Erika Hegewisch Collection. Formerly Kornfeld. #135, 06/17/87.

**OPP.04:151**; PP.04:028; Z.VI:661; CH.97:15p; HN.00\*:55

---

**Profil gauche d'homme**. Paris. 1904. Pen & India ink on paper. 17 x 11,5 cm. Private collection.

**OPP.04:152**; PP.04:118; Z.XXII:90; MG.04b\*:20





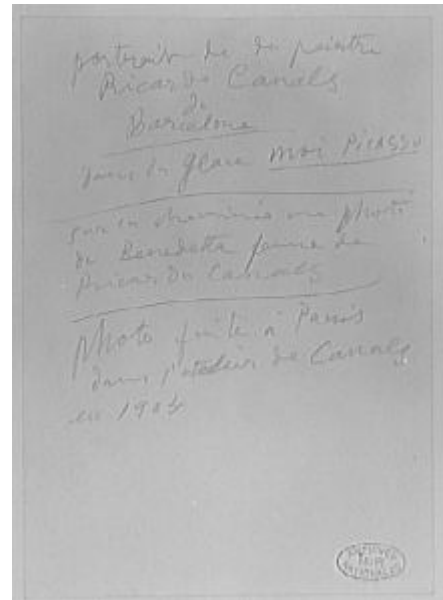


**Deux nus et vieille à la clé.** Paris. 1904. Pen & brown ink and black watercolor or gouache on wove paper. 25,4 x 16,8 cm. The Barnes Foundation, Merion, PA. (Inv BF.685).

**OPP.04:154**; PP.05:355

**Annotation.** Paris. 1904. Ink on back of photograph [Reverse of *Ricard Canals dans son atelier*]. 16,3 x 10,7 cm. Musée Picasso, Paris. (Inv APPH2802).

**OPP.04:157**





**Au centre: nu les bras levés (Études).** Paris. 1904. India ink on paper. 32,5 x 25,5 cm. Private collection.

**OPP.04:159**; PP.04:098; Z.XXII:69

---

**Homme debout, trois têtes de profil et taureau.** Paris. 1904. Graphite on paper. 30 x 41,5 cm. Private collection.

**OPP.04:160**; PP.04:099; Z.XXII:71



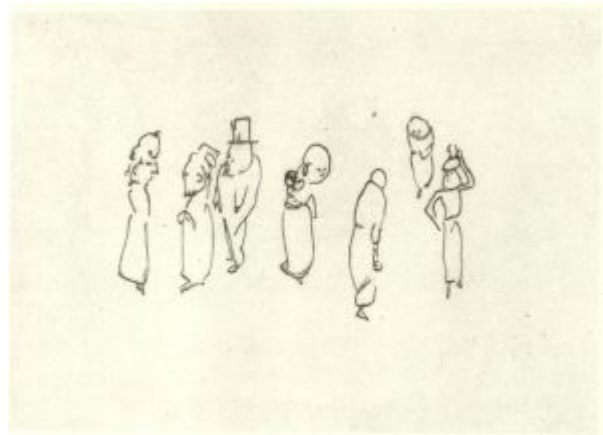


**Étude pour la pièce de Gustave Coquiot et Jean Lorrain au Hôtel de l'Ouest, Chambre 22.** Paris. [Summer~Fall]/1904. Blue crayon [Obverse of *Étude pour la pièce de Gustave Coquiot et Jean Lorrain au Hôtel de l'Ouest, Chambre 22*]. 38 x 27,5 cm. Private collection.

**OPP.04:161**; PP.04:088; Z.XXII:72

**Personnages.** Paris. 1904. India ink on paper. 31 x 41 cm. Private collection.

**OPP.04:163**; PP.04:106; Z.XXII:78





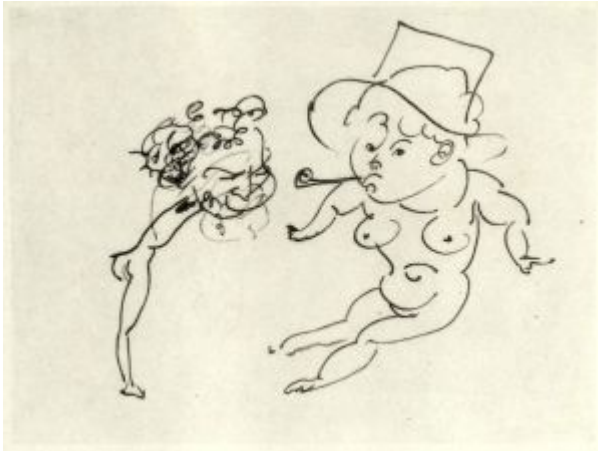
**Personnages.** Paris. 1904. India ink on paper. 18 x 11 cm. Private collection.

**OPP.04:164**; PP.04:108; Z.XXII:80

**Deux personnages.** Paris. 1904. India ink on paper. 12 x 14,5 cm. Private collection.

**OPP.04:165**; PP.04:109; Z.XXII:81





**Deux personnages.** Paris. 1904. India ink on paper. 29 x 41,5 cm. Private collection.

**OPP.04:166**; PP.04:110; Z.XXII:82

---

**Pierrot portant un enfant.** Paris. 1904. India ink on paper. 23,5 x 15 cm. Private collection.

**OPP.04:168**; PP.04:116; Z.XXII:88





**Femme la main posée sur la hanche.** Paris. 1904. India ink on paper. 32,5 x 25,5 cm. Private collection.

**OPP.04:169**; PP.04:117; Z.XXII:89

**Personnages et chateaux.** Paris. 1904. India ink on paper. 10 x 41 cm. Private collection.

**OPP.04:172**; PP.04:121; Z.XXII:97





**Pas de présentation.** Paris. 1904. Pen & ink on paper. 24 x 34,4 cm. Private collection.

**OPP.04:188**; PP.0405:010; Z.VI:626

---

**Homme et femme nus.** Paris. 1904. Pen & ink on paper. 35 x 25 cm. Private collection. Formerly Alfred Flechtheim Collection.

**OPP.04:202**; BR.17\*:123





**Planche de dessins de Max Jacob et Picasso.** Paris. 1904~1905. Drypoint on Arches fly-leaf paper. 29,1 x 24,9 cm. Musée Picasso, Paris. Dation 1979.

**OPP.04:129**; Ba:8; MPP:1895; DO.07\*:30; HS.94\*:48; JC.98\*:1; PA.19h\*:175; PA.22d\*:61; PB.21:91; RL.92\*:29b; UW.84:66p



**Planche de dessins de Max Jacob et Picasso.** Paris. 1904~1905. Copper plate for *Planche de dessins de Max Jacob et Picasso*. 29,2 x 25 cm. Musée Picasso, Paris.

**OPP.04:145**; HS.94\*:47





**Femme assise.** Paris. 1904~1905. Watercolor & graphite on wove paper. 36,2 x 26,4 cm. The Barnes Foundation, Merion, PA. (Inv BF.122).

---

**OPP.04:153**

---

**La danse.** Paris. 1904~1905. Crayon. 24 x 32 cm. Private collection.

---

**OPP.04:170**; PP.0405:004; Z.XXII:95





**La danse.** Paris. 1904~1905. Crayon. 23,5 x 32 cm. Private collection.

**OPP.04:171**; PP.0405:005; Z.XXII:96

---

**Portrait d'Ibsen.** Paris. 1904~1905. India ink on paper. 21 x 13,5 cm. Private collection.

**OPP.04:173**; PP.0405:002; Z.XXII:127





**Portrait de Paganini (Le violoniste).** Paris. 1904~1905. Graphite on paper. 32,5 x 21 cm. The Picasso Estate. (Inv 654).

**OPP.04:174**; PP.0405:003; Z.XXII:128; AB.97b\*:28; PA.20j\*:127

---

**Nu de face.** Paris. 1904~1905. Pen & ink on paper. 17,5 x 10,8 cm. Frederick Stafford Collection, Paris.

**OPP.04:176**; PP.0405:001; Z.XXII:116





**Jeune femme portant une cruche.** Paris. 1904 [1905]. Pen & ink on paper. S/U. Private collection.

**OPP.04:177**; PP.0405:006; Z.VI:516

---

**Études.** Paris. 1904 [1905]. Pen & ink on paper. 20 x 13 cm. Private collection.

**OPP.04:180**; PP.0405:031; Z.VI:605





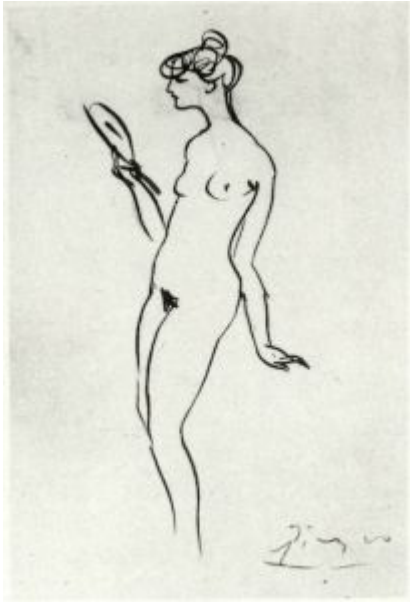
**Couple.** Paris. 1904 [1905]. Pen & ink on paper.  
S/U. Private collection.

**OPP.04:182**; PP.0405:016; Z.VI:685

**La présentation à une dame mondaine.**  
Paris. [1904] [1905]. Pen & ink on paper.  
14,5 x 34,4 cm. Private collection.

**OPP.04:186**; PP.0405:009; Z.VI:623





**Femme au miroir.** Paris. 1904 [1905]. Pen & ink on paper. 15 x 12 cm. Private collection.

**OPP.04:189**; PP.0405:012; Z.VI:639

---

**Études main et femme de dos.** Paris. 1904 [1905]. Ink & color pencil [Oic]. 12 x 11,3 cm. Private collection.

**OPP.04:190**; PP.0405:013; Z.VI:642





**Couples dansant.** Paris. 1904 [1905]. Pen & ink on paper. 13 x 10,2 cm. Private collection.

**OPP.04:191**; PP.0405:014; Z.VI:643

---

**Nu assis et vieille femme.** Paris. 1904 [1905]. Pen & ink on paper. 20,8 x 13,5 cm. Private collection.

**OPP.04:192**; PP.0405:015; Z.VI:644

